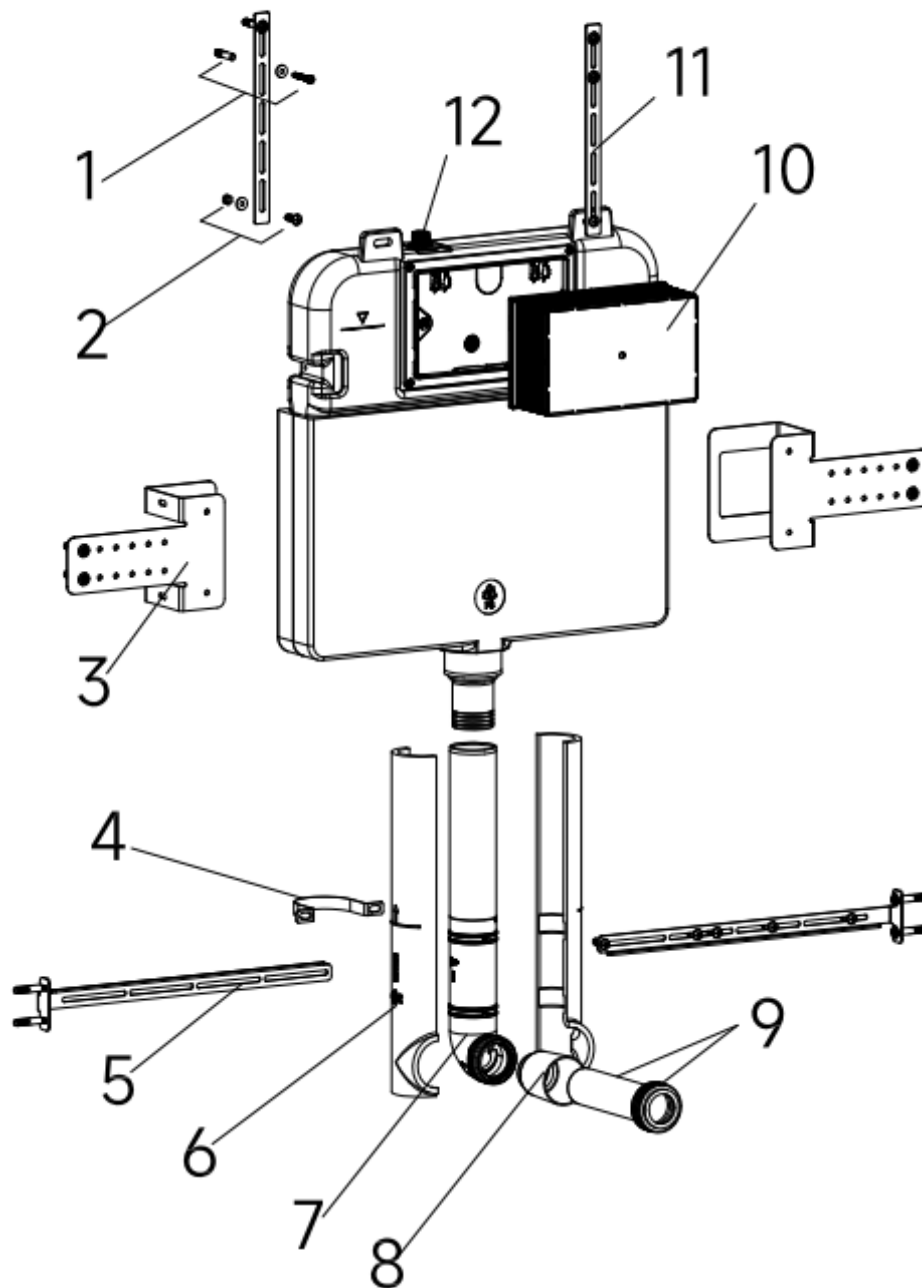




— Concealed Cistern —

— Installation Manual —



List of main installation accessories

No.	Description	Qty	Function
1	Expansion screw	12	Apply for long metal plate, fixing metal plate and L-shape metal plate
2	Screws	7	Apply for long metal plate and L-shape metal plate
3	Fixing metal plate	2	Fixation of concealed cistern
4	Mounting bracket	1	Apply to fix connecting bend pipe
5	L-shape metal plate	2	Fixation of concealed cistern
6	Tube cover	2	To protect connecting tube
7	Connecting tube	1	Water inlet to ceramic bowl
8	Piping stopper	1	To reserve space for flushing piping at wall building
9	Flushing piping	1	To joint cistern into ceramic bowl (cutting in accordance with wall thickness)
10	Installation box	1	Reserve space for installing push plate and avoid dust or other dirt entering cistern when building wall.
11	Iron bracket	2	Fixation of concealed cistern
12	Angle valve	1	Fill valve inlet and shut-off

Important instruction:

1. Please adhere to the following installation instructions. We shall not be responsible for failures and loss that are contributed to improper installation.

2. Please confirm the fixation location of cistern prior to installation and obtain the finished floor surface. Draw FEL on installation wall and follow it as baseline from ZERO (0) level.

3. The instructions have been composed based in the latest product specifications. We reserve the right to make modifications to the packaging and specifications without providing prior notification.

NOTES:

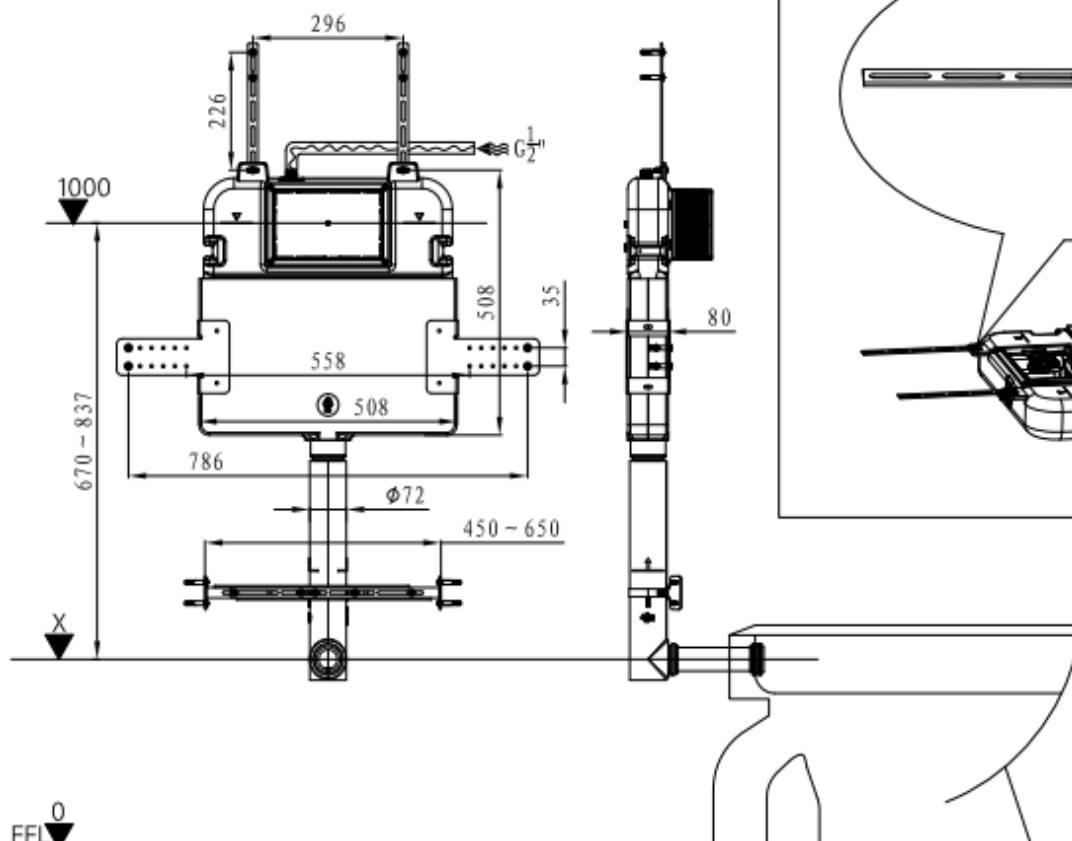
1. Mount before bricks building.
2. All size unit in MM.
3. Follow the material product, should there is an unconformity with drawing.

⚠ FFL⁰ = FINISHED FLOOR

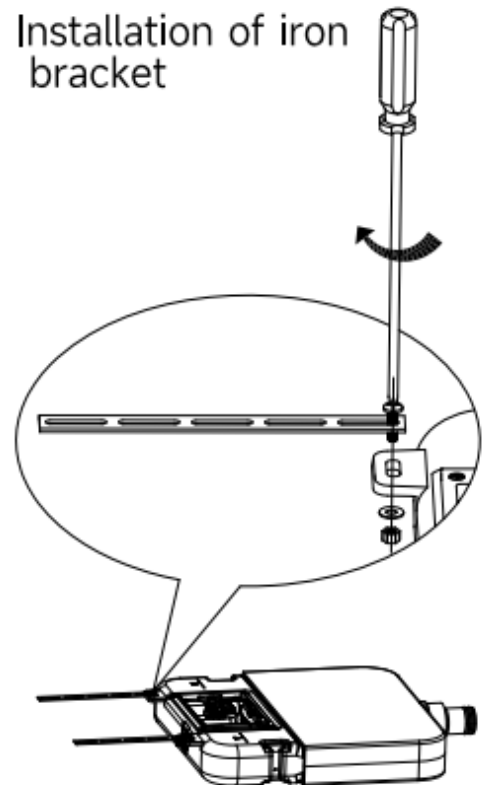
1. General dimension and water supply drawing

Water supply to cistern.

(water supply should be connected to angle valve inside cistern)

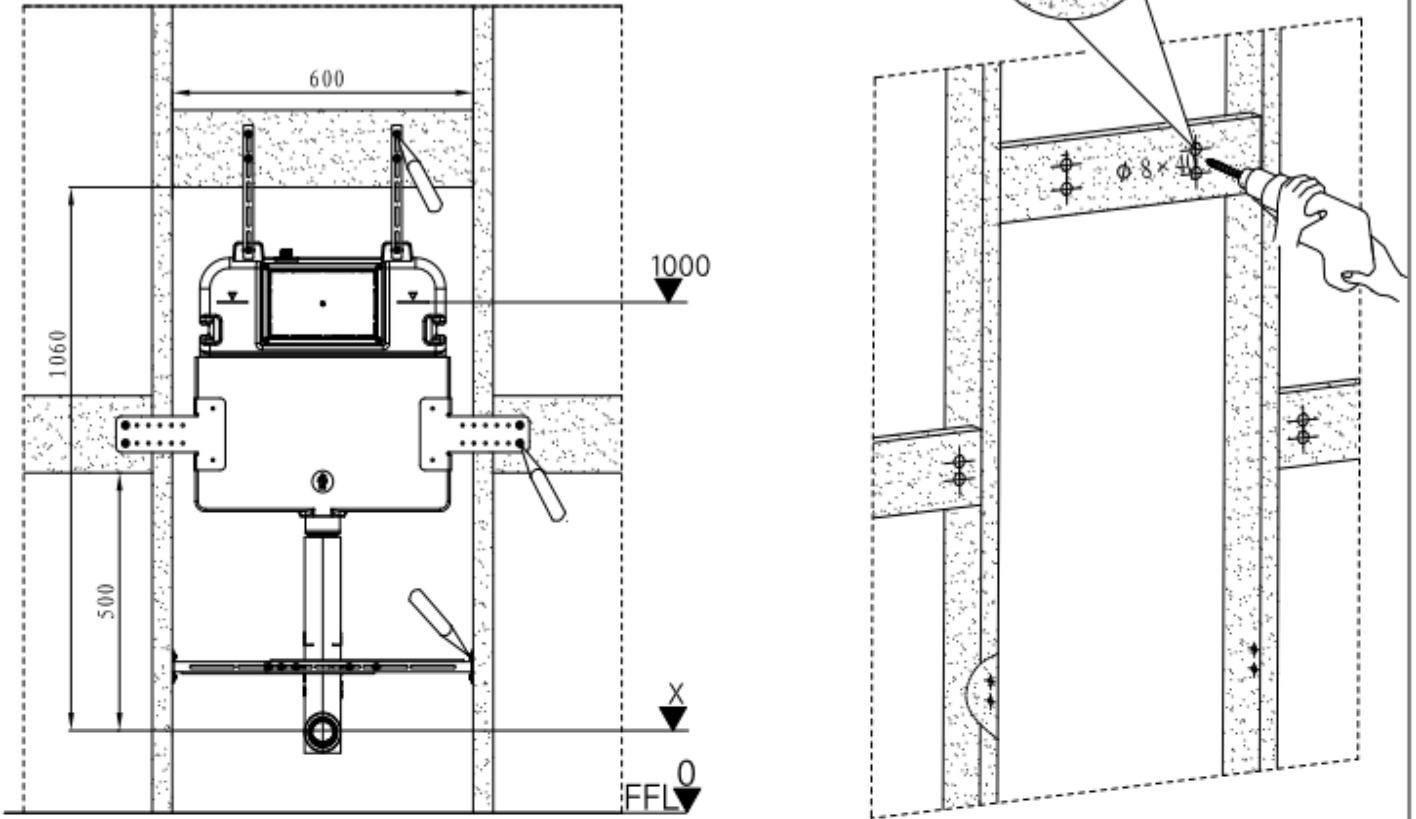


2. Installation of iron bracket

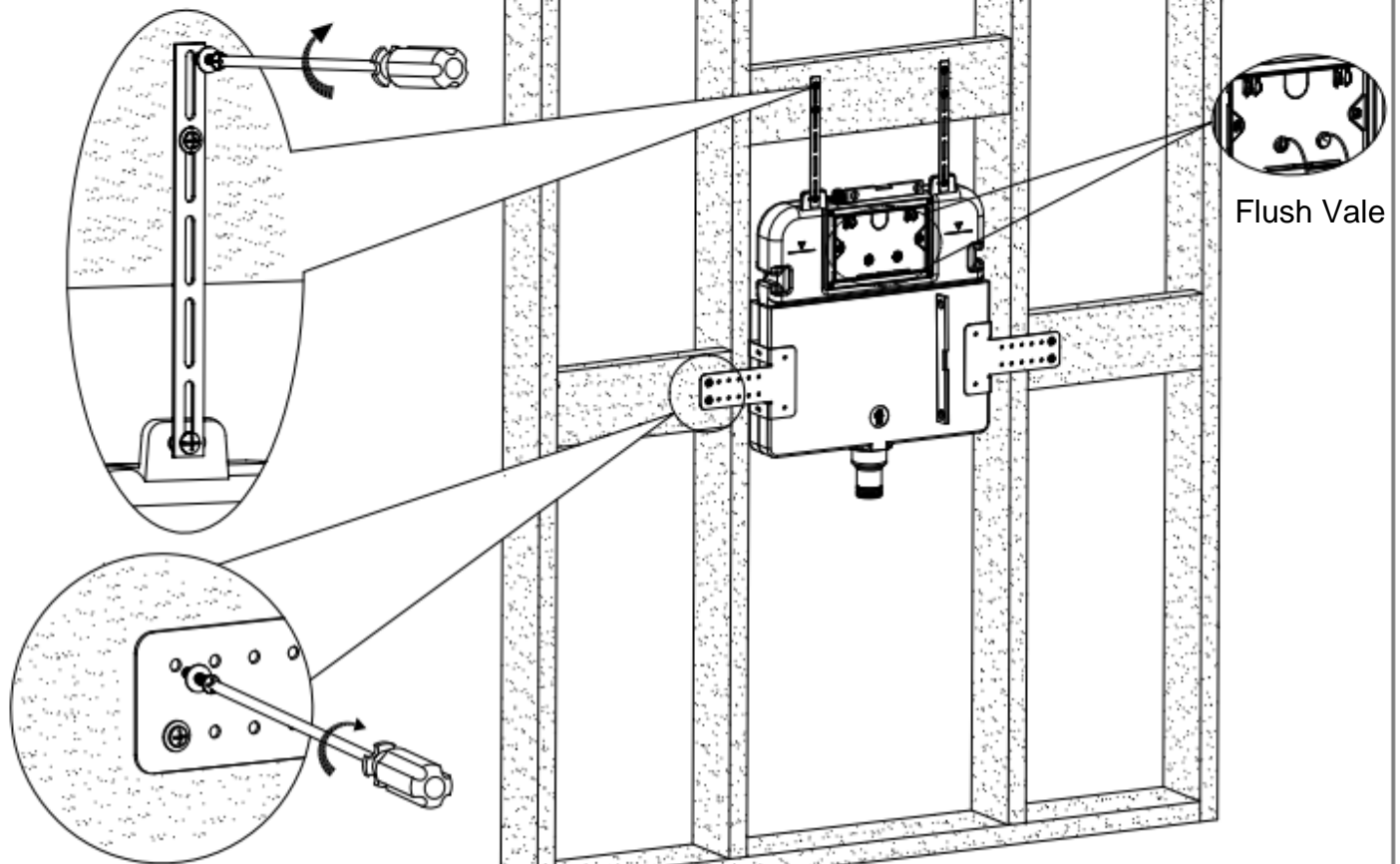


3. Install the wooden frame and drill into the expansion head:

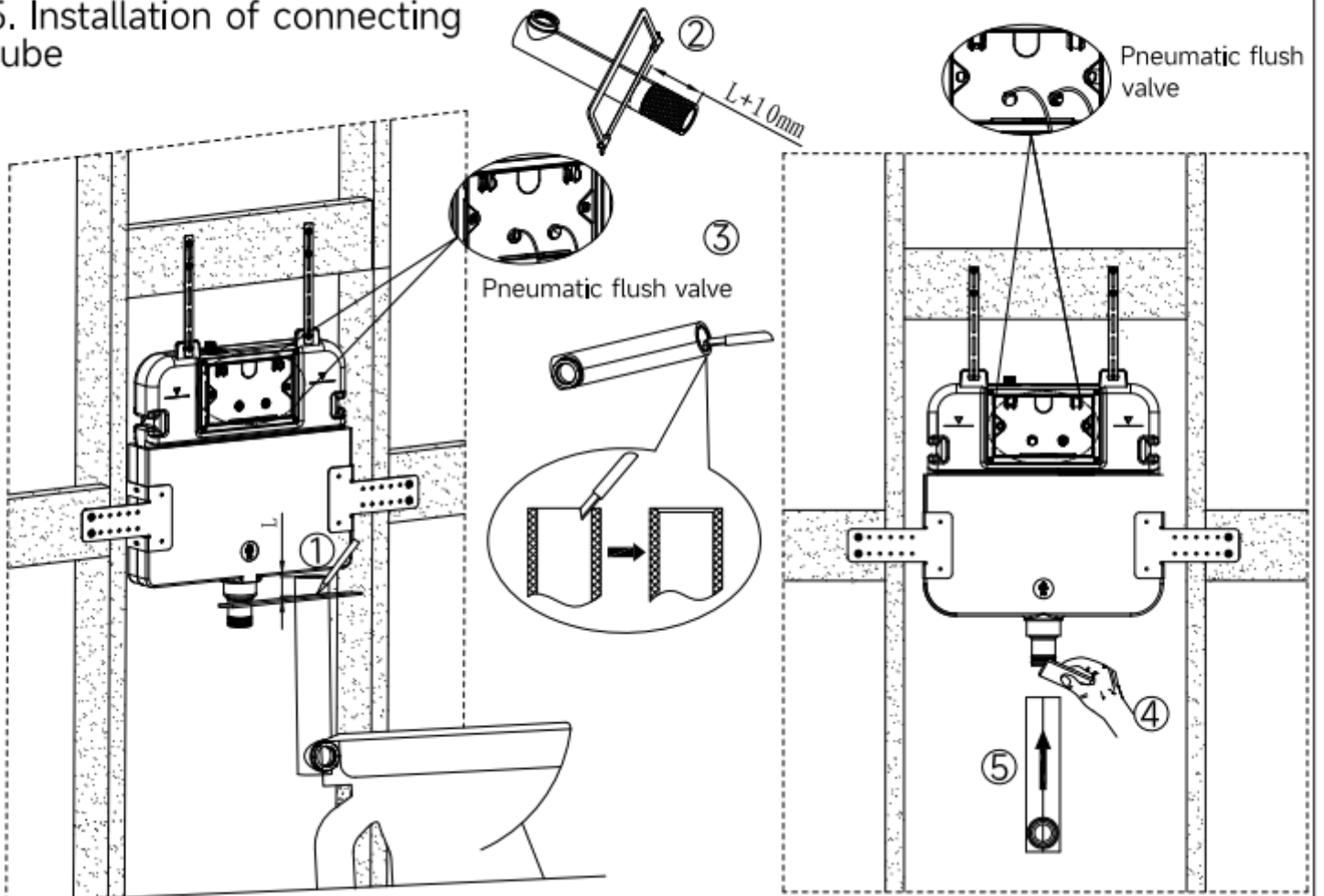
☆Note: Follow the practical location of iron bracket to drill properly.



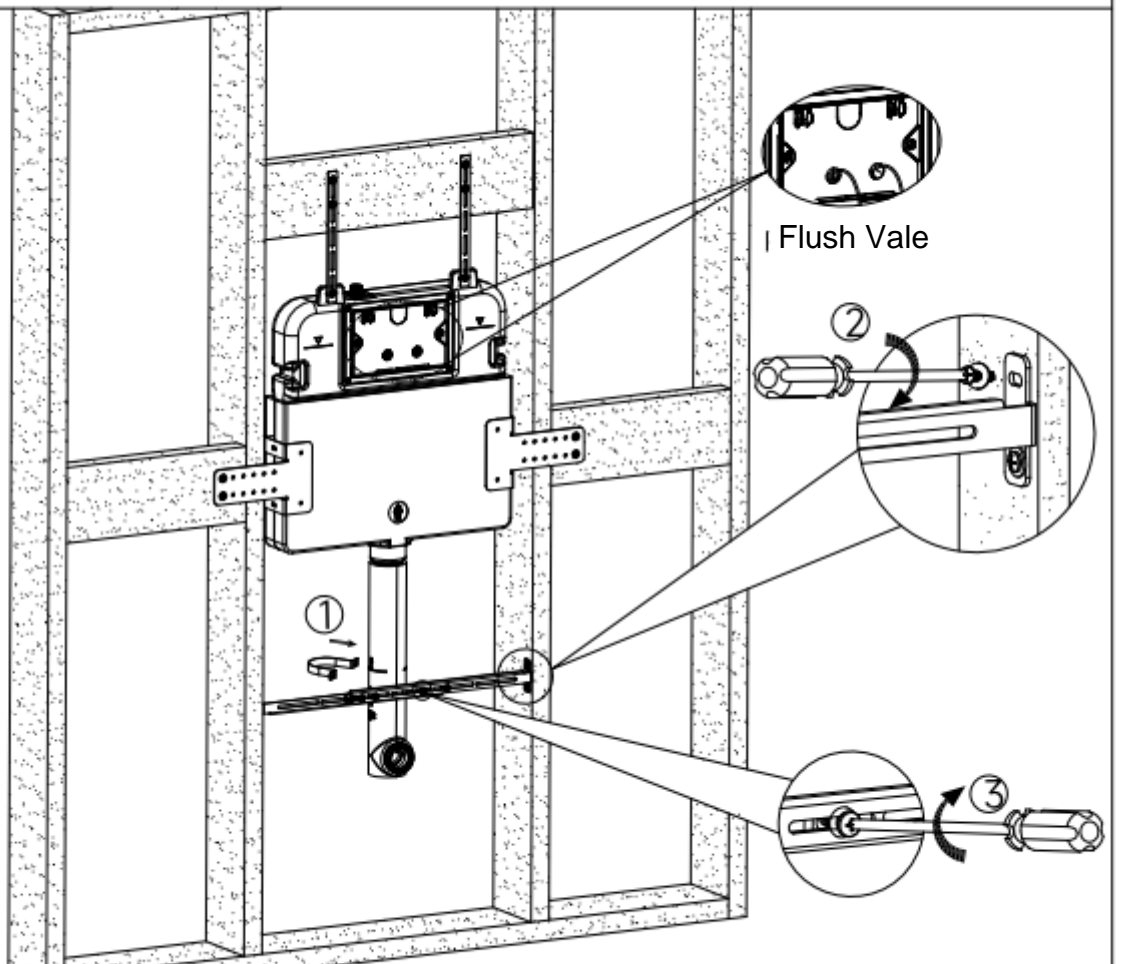
4. Installation of concealed cistern



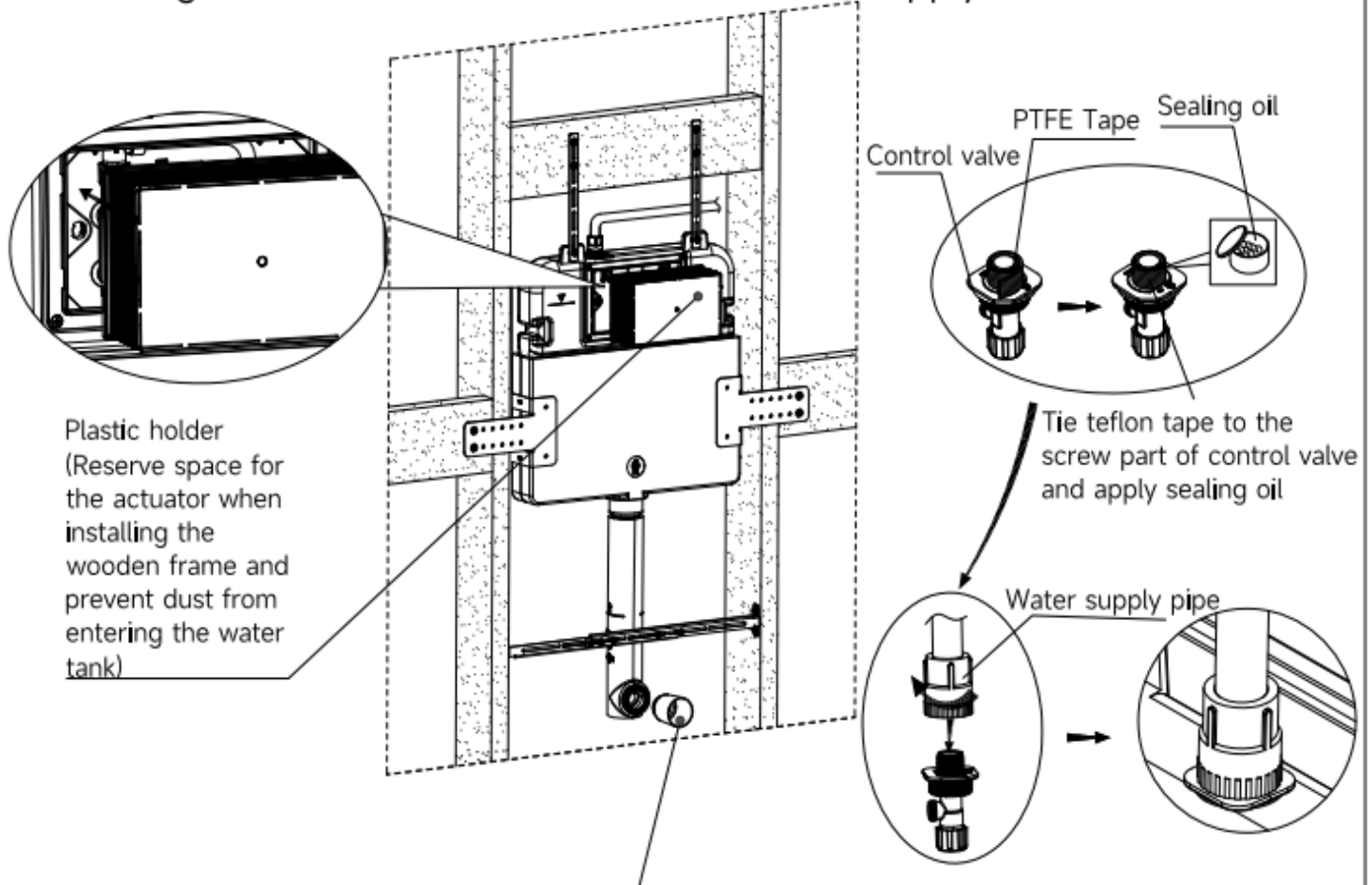
5. Installation of connecting tube



6. L-shape metal plate installation

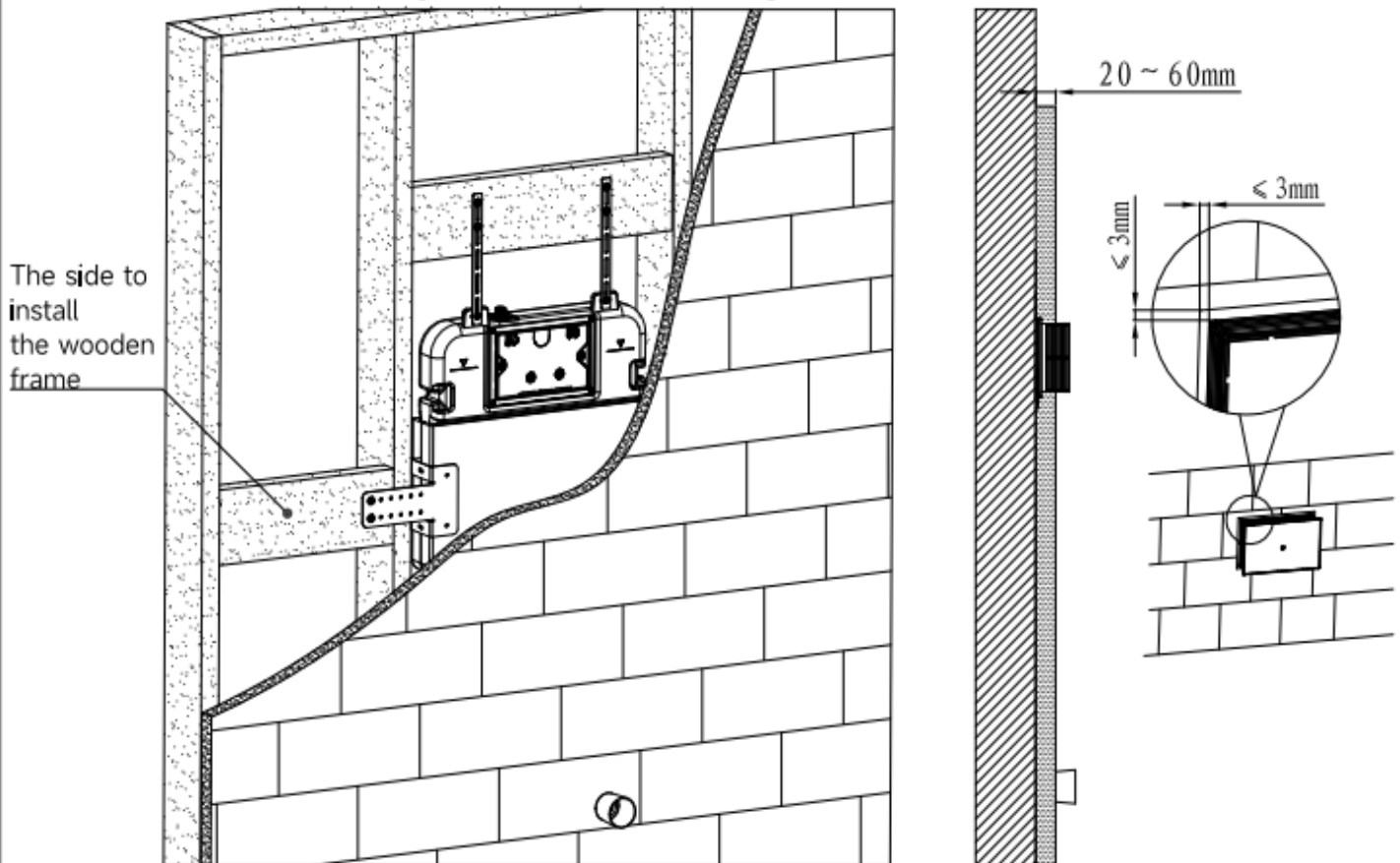


7. Mounting of installation accessories and water supply line

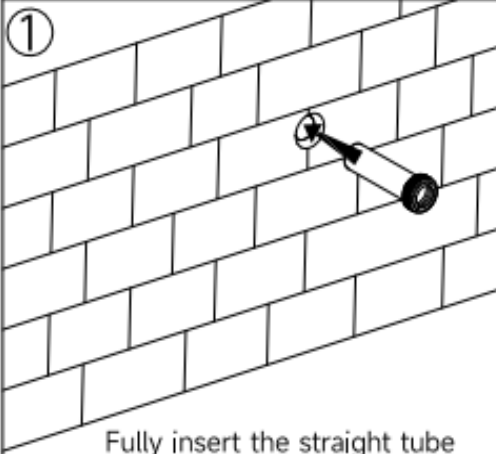


Small plugging tube (Wood frame should be reserved space for flushing straight pipe)

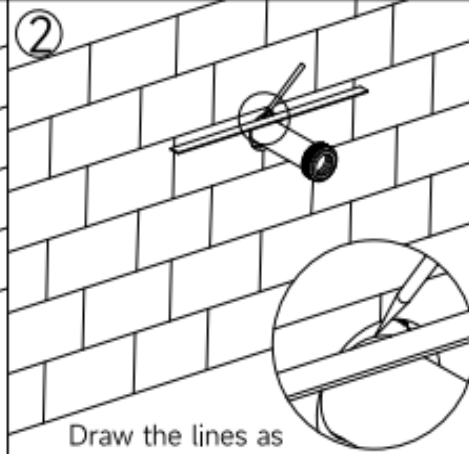
8. Wall thickness range 20-60mm From the installation of the wood frame surface to the finishing surface after tiling



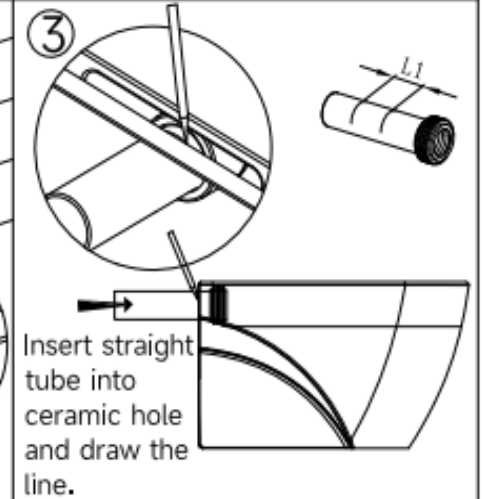
9. Installation of straight tube



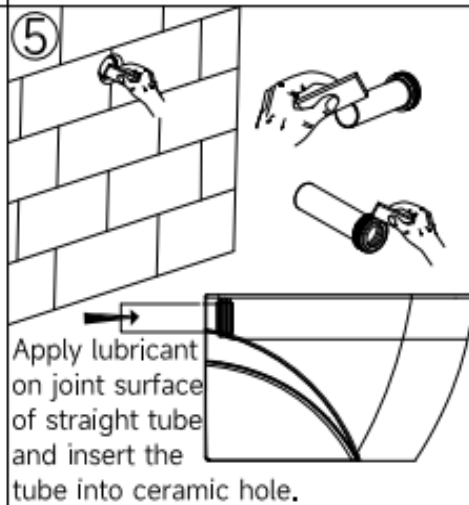
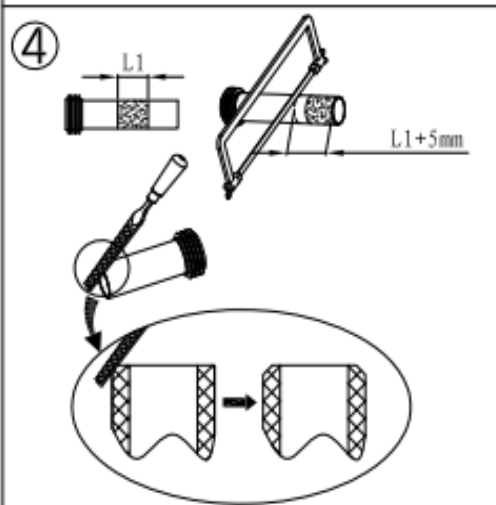
Fully insert the straight tube into cistern flushing outlet.



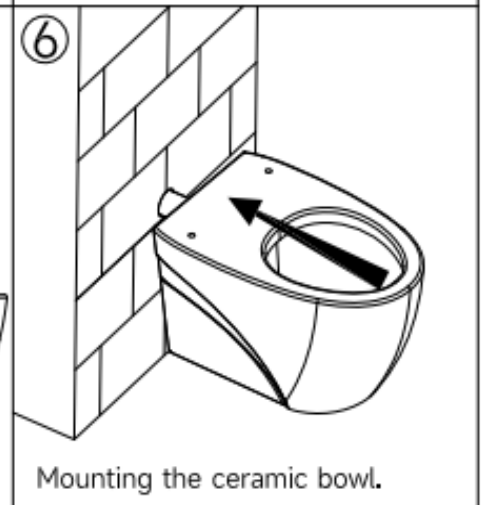
Draw the lines as above picture.



Insert straight tube into ceramic hole and draw the line.

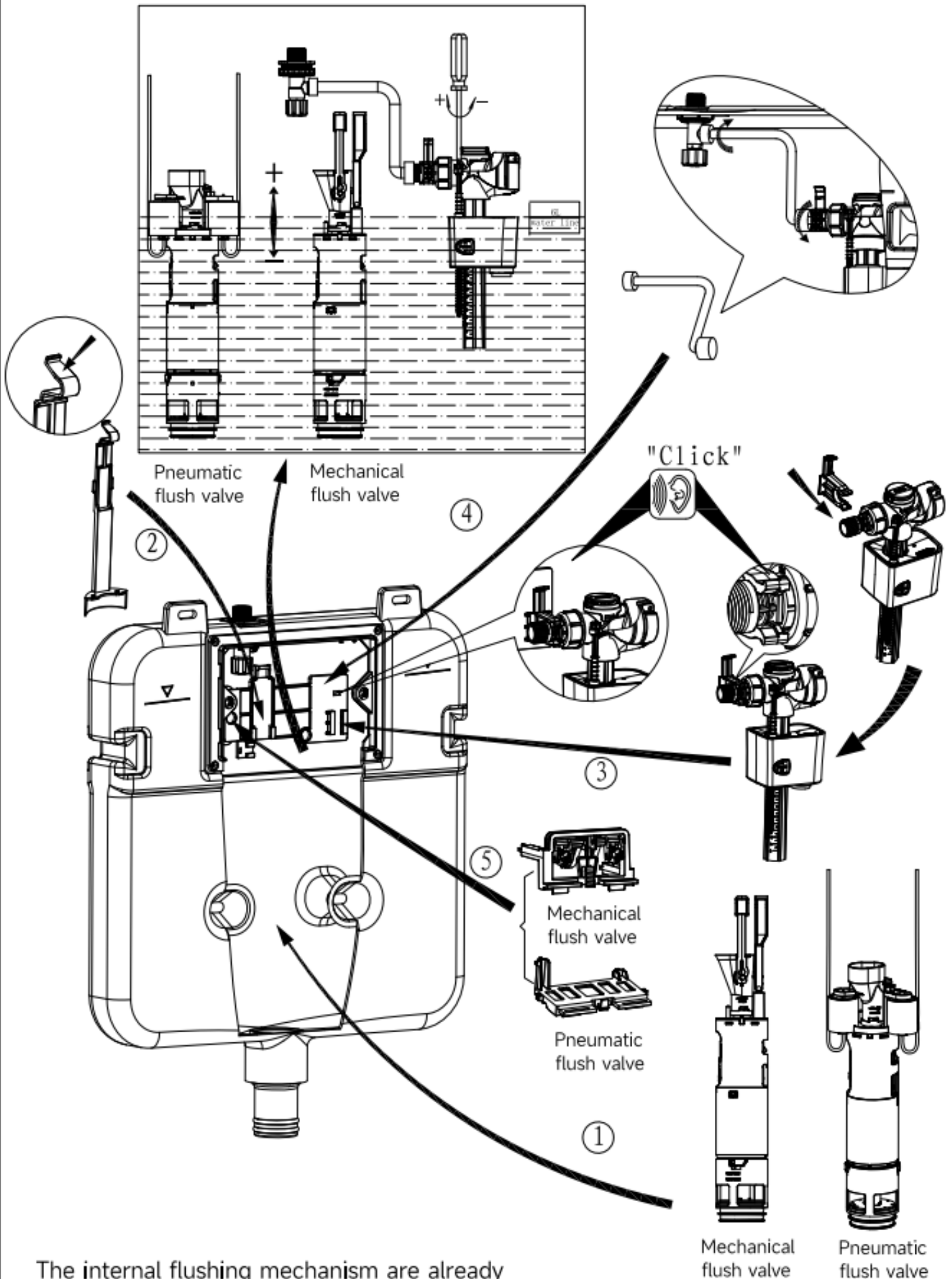


Apply lubricant on joint surface of straight tube and insert the tube into ceramic hole.



Mounting the ceramic bowl.

10. Internal flushing mechanism assembly drawing



The internal flushing mechanism are already well-assembled and above picture only for reference.

ASGFA30033012A-1.0